

Harry Edgeworth  
The Planning Inspectorate  
Crown Buildings  
Cathays Park  
Cardiff  
CF10 3NQ

Plant Protection  
Cadent  
Block 1; Floor 1  
Brick Kiln Street  
Hinckley  
LE10 0NA  
E-mail: g [REDACTED]  
Telephone: [REDACTED]

**National Gas Emergency Number:**  
**0800 111 999\***

**National Grid Electricity Emergency Number:**  
**0800 40 40 90\***

\* Available 24 hours, 7 days/week.  
Calls may be recorded and monitored.

[www.cadentgas.com](http://www.cadentgas.com)

**Date:** 07/09/2020

**Our Ref:** XX\_GW3A\_3NWP\_025423

**Your Ref:** DNS/3227364 esri (BK)

**RE: Formal Planning Application, Land to the East of the A48 and Land to the South West of Tycroes, Carmarthenshire**

Thank you for your enquiry which was received on 04/09/2020.  
Please note this response and any attached map(s) are valid for 28 days.

An assessment has been carried out with respect to Cadent Gas Limited, National Grid Electricity Transmission plc's and National Grid Gas Transmission plc's apparatus. Please note it does not cover the items listed in the section "Your Responsibilities and Obligations", including gas service pipes and related apparatus.

For details of Network areas please see the Cadent website (<http://cadentgas.com/Digging-safely/Dial-before-you-dig>) or the enclosed documentation.

### Are My Works Affected?

**Searches based on your enquiry have identified that there is apparatus in the vicinity of your enquiry which may be affected by the activities specified.**

**Can you please inform Plant Protection, as soon as possible, the decision your authority is likely to make regarding this application.**

If the application is refused for any other reason than the presence of apparatus, we will not take any further action.

Please let us know whether Plant Protection can provide you with technical or other information that may be of assistance to you in the determination of the application.

**As your proposed activity is in close proximity to National Grid's Transmission assets we have referred your enquiry/consultation to our Asset Protection team for further detailed assessment. We request that you do not commence work or take further action with regards to your proposal until you hear from us. We will endeavour to contact you within 21 days from the date of this response. Please contact us at [assetprotection@nationalgrid.com](mailto:assetprotection@nationalgrid.com) if you have not had a response within this time frame.**

Due to the presence of Cadent and/or National Grid apparatus in proximity to the specified area, the contractor should contact Plant Protection before any works are carried out to ensure the apparatus is not affected by any of the proposed works.

## Your Responsibilities and Obligations

The "Assessment" Section below outlines the detailed requirements that must be followed when planning or undertaking your scheduled activities at this location.

It is your responsibility to ensure that the information you have submitted is accurate and that all relevant documents including links are provided to all persons (either direct labour or contractors) working for you near Cadent and/or National Grid's apparatus, e.g. as contained within the Construction (Design and Management) Regulations.

This assessment solely relates to Cadent Gas Limited, National Grid Electricity Transmission plc (NGET) and National Grid Gas Transmission plc (NGGT) and apparatus. This assessment does **NOT** include:

- | Cadent and/or National Grid's legal interest (easements or wayleaves) in the land which restricts activity in proximity to Cadent and/or National Grid's assets in private land. You must obtain details of any such restrictions from the landowner in the first instance and if in doubt contact Plant Protection.
- | Gas service pipes and related apparatus
- | Recently installed apparatus
- | Apparatus owned by other organisations, e.g. other gas distribution operators, local electricity companies, other utilities, etc.

It is **YOUR** responsibility to take into account whether the items listed above may be present and if they could be affected by your proposed activities. Further "Essential Guidance" in respect of these items can be found on either the [National Grid](#) or [Cadent](#) website.

This communication does not constitute any formal agreement or consent for any proposed development work; either generally or with regard to Cadent and/or National Grid's easements or wayleaves nor any planning or building regulations applications.

Cadent Gas Limited, NGGT and NGET or their agents, servants or contractors do not accept any liability for any losses arising under or in connection with this information. This limit on liability applies to all and any claims in contract, tort (including negligence), misrepresentation (excluding fraudulent misrepresentation), breach of statutory duty or otherwise. This limit on liability does not exclude or restrict liability where prohibited by the law nor does it supersede the express terms of any related agreements.

If you require further assistance please contact the Plant Protection team via e-mail ([click here](#)) or via the contact details at the top of this response.

Yours faithfully

Plant Protection Team

# ASSESSMENT

## Affected Apparatus

The apparatus that has been identified as being in the vicinity of your proposed works is:

- | National Gas Transmission Pipelines and associated equipment

As your proposal is in proximity to apparatus, we have referred your enquiry / consultation to the following department(s) for further assessment:

- | Land and Development Asset Protection Team (High Pressure Gas Transmission and Electricity Transmission Apparatus)

**We request that you take no further action with regards to your proposal until you hear from the above. We will contact you within 28 working days from the date of this response. Please contact us if you have not had a response within this timeframe.**

## Requirements

**BEFORE carrying out any work you must:**

- | **Ensure that no works are undertaken in the vicinity of our gas pipelines and that no heavy plant, machinery or vehicles cross the route of the pipeline until detailed consultation has taken place.**
- | Carefully read these requirements including the attached guidance documents and maps showing the location of apparatus.
- | Contact the landowner and ensure any proposed works in private land do not infringe Cadent and/or National Grid's legal rights (i.e. easements or wayleaves). If the works are in the road or footpath the relevant local authority should be contacted.
- | Ensure that all persons, including direct labour and contractors, working for you on or near Cadent and/or National Grid's apparatus follow the requirements of the HSE Guidance Notes HSG47 - 'Avoiding Danger from Underground Services' and GS6 – 'Avoidance of danger from overhead electric power lines'. This guidance can be downloaded free of charge at <http://www.hse.gov.uk>
- | In line with the above guidance, verify and establish the actual position of mains, pipes, cables, services and other apparatus on site before any activities are undertaken.

# GUIDANCE

## **High Pressure Gas Pipelines Guidance:**

If working in the vicinity of a high pressure gas pipeline the following document must be followed: 'Specification for Safe Working in the Vicinity of Cadent and/or National Grid High Pressure Gas Pipelines and Associated Installations - Requirements for Third Parties' (SSW22). This can be obtained from: <http://www2.nationalgrid.com/WorkArea/DownloadAsset.aspx?id=33968>

## **National High Pressure Gas Pipelines Guidance:**

<http://www.nationalgrid.com/NR/rdonlyres/9934F173-04D0-48C4-BE4D-82294822D29C/51893/Above7barGasGuidance.pdf>

## **Dial Before You Dig Pipelines Guidance:**

<http://www2.nationalgrid.com/WorkArea/DownloadAsset.aspx?id=33969>

## **Standard Guidance**

### **Essential Guidance document:**

<http://www2.nationalgrid.com/WorkArea/DownloadAsset.aspx?id=8589934982>

### **General Guidance document:**

<http://www2.nationalgrid.com/WorkArea/DownloadAsset.aspx?id=35103>

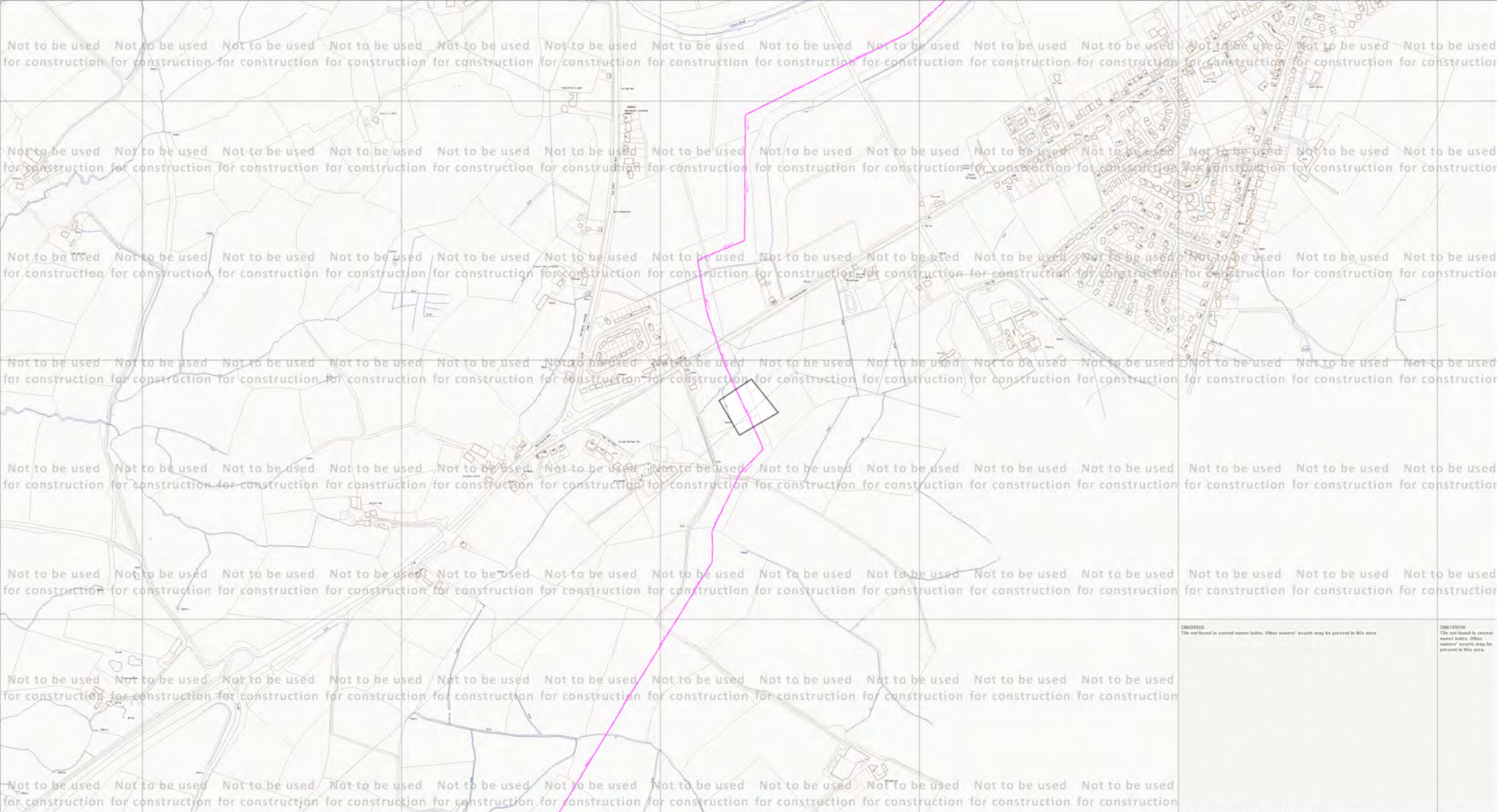
### **Excavating Safely in the vicinity of gas pipes guidance (Credit card):**

<http://www.nationalgrid.com/NR/rdonlyres/A3D37677-6641-476C-9DDA-E89949052829/44257/ExcavatingSafelyCreditCard.pdf>

### **Excavating Safely in the vicinity of electricity cables guidance (Credit card):**

<http://www.nationalgrid.com/NR/rdonlyres/35DDEC6D-D754-4BA5-AF3C-D607D05A25C2/44858/ExcavatingSafelyCreditCardelectricitycables.pdf>

Copies of all the Guidance Documents can also be downloaded from the [National Grid](#) and [Cadent](#) websites.



SN6959E  
File not found in current owner index. Other owners' assets may be present in this area.


SN61959W  
File not found in current owner index. Other owners' assets may be present in this area.

ID: XX\_GW3A\_3NWP\_025423  
 USER: Bethany Kennard  
 DATE: 07/09/2020  
 DATA DATE: 06/09/2020  
 REF: DNS/3227364 esri (BK)  
 MAP REF: SN5909  
 CENTRE: 259670, 209910

View extent: 2890m, 1570m  
 LP MAINS ————  
 MP MAINS — — — —  
 IP MAINS - - - - -  
 LHP MAINS — — — —  
 NHP MAINS - - - - -  
 0m ————— 200m  
 Approximate scale 1:10000  
 on A4 Colour Landscape

**Do not proceed without further consultation**

This plan shows those pipes owned by Cadent Gas Limited in its role as a Licensed Gas Transporter (GT). Gas pipes owned by other GTs, or otherwise privately owned, may be present in this area. Information with regard to such pipes should be obtained from the relevant owners. The information shown on this plan is given without warranty, the accuracy thereof cannot be guaranteed. Service pipes, valves, syphons, stub connections, etc., are not shown but their presence should be anticipated. No liability of any kind whatsoever is accepted by Cadent Gas Limited or their agents, servants or contractors for any error or omission. Safe digging practices, in accordance with HS(G)47, must be used to verify and establish the actual position of mains, pipes, services and other apparatus on site before any mechanical plant is used. It is your responsibility to ensure that this information is provided to all persons (either direct labour or contractors) working for you on or near gas apparatus. The information included on this plan should not be referred to beyond a period of 28 days from the date of issue.

Map 1 of 1 (GAS)  
 MAPS Plot Server Version 1.11.0  
  
 Your Gas Network  
 Requested by: The Planning Inspectorate  
 This plan is reproduced from or based on the OS map by Cadent Gas Limited, with the sanction of the controller of HM Stationery Office.  
 Crown Copyright Reserved.  
 Ordnance Survey Licence number 100024886



# ENQUIRY SUMMARY

## Received Date

04/09/2020

## Your Reference

DNS/3227364 esri (BK)

## Location

Centre Point: 259670, 209910

X Extent: 118

Y Extent: 112

Postcode: SA18 3RE

Location Description: Land to the East of the A48 and Land to the South West of Tycroes, Carmarthenshire

## Map Options

Paper Size: A4

Orientation: LANDSCAPE

Requested Scale: 1250

Actual Scale: 1:10000 (GAS)

Real World Extents: 2890m x 1570m (GAS)

## Recipients

pprsteam@cadentgas.com

## Enquirer Details

Organisation Name: The Planning Inspectorate

Contact Name: Harry Edgeworth

Email Address: dns.wales@planninginspectorate.gov.uk

Telephone: 0303 444 5071

Address: Crown Buildings, Cathays Park, Cardiff, CF10 3NQ

## Description of Works

PA- Proposed installation of a ground mounted Photo Voltaic (PV) solar farm development, including proposed cable route -DB

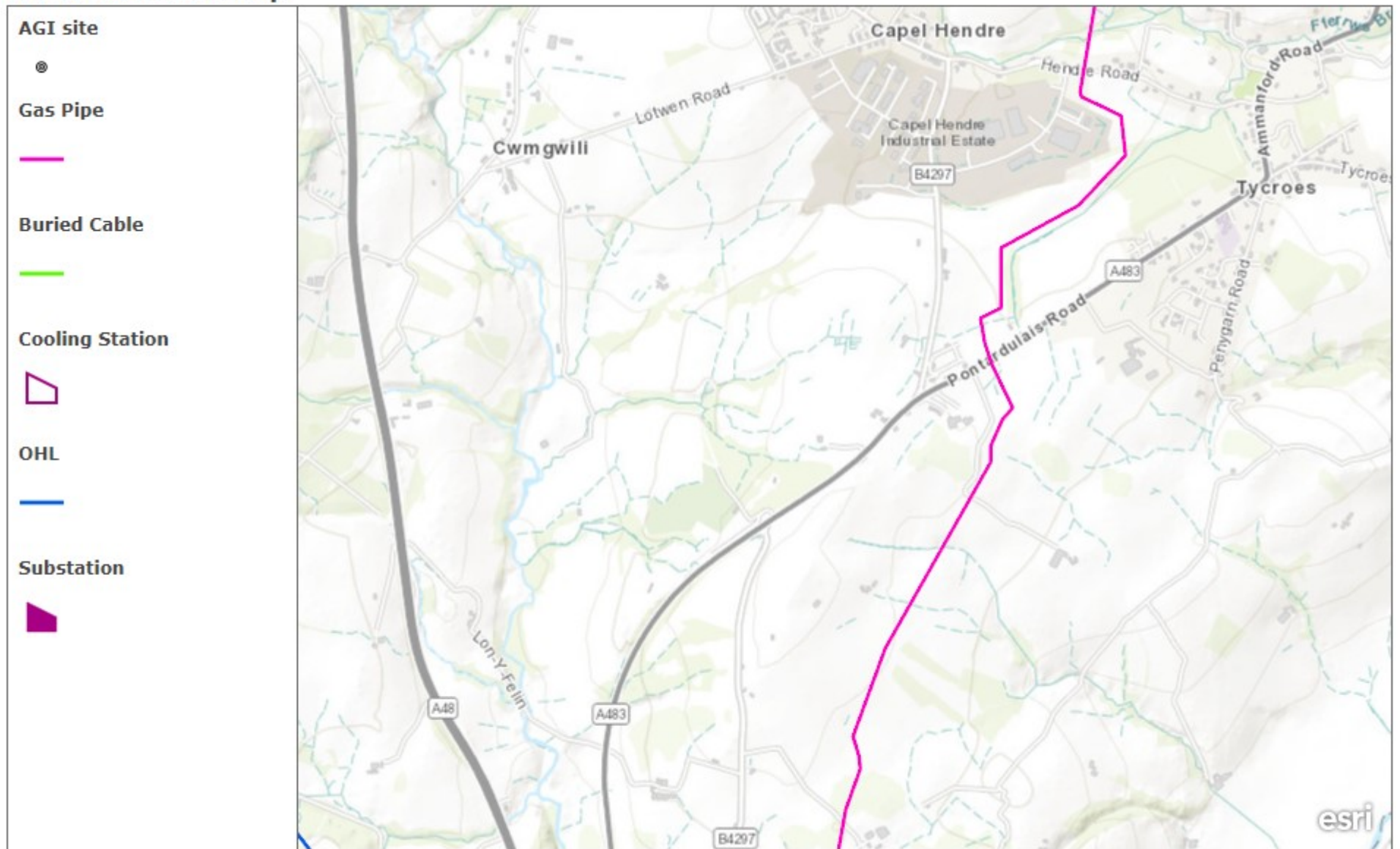
## Enquiry Type

Formal Planning Application

## Development Types

Development Type: Other

# Plant Protection map



0.6km