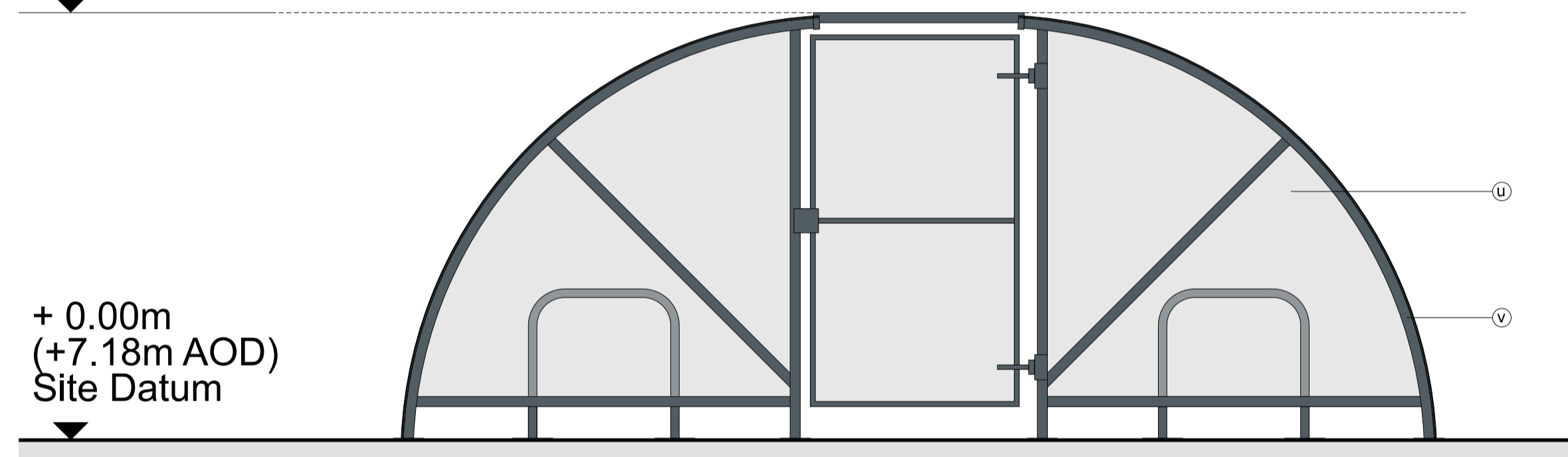


Ground Plan

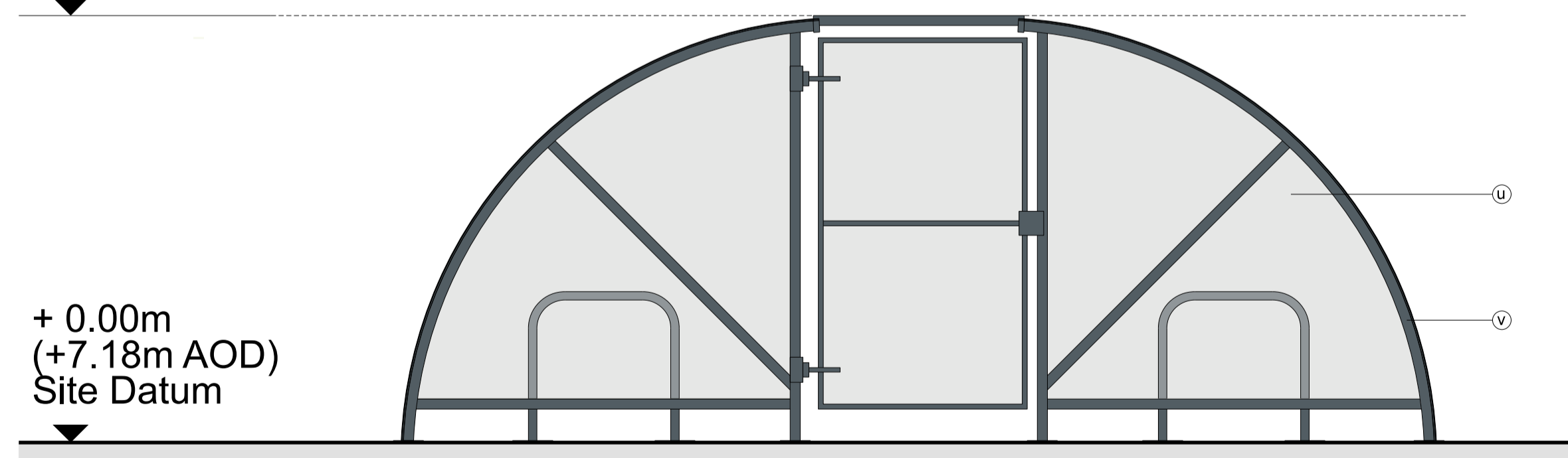
+ 2.13m
Top of roof



+ 0.00m
(+7.18m AOD)
Site Datum

South East Elevation

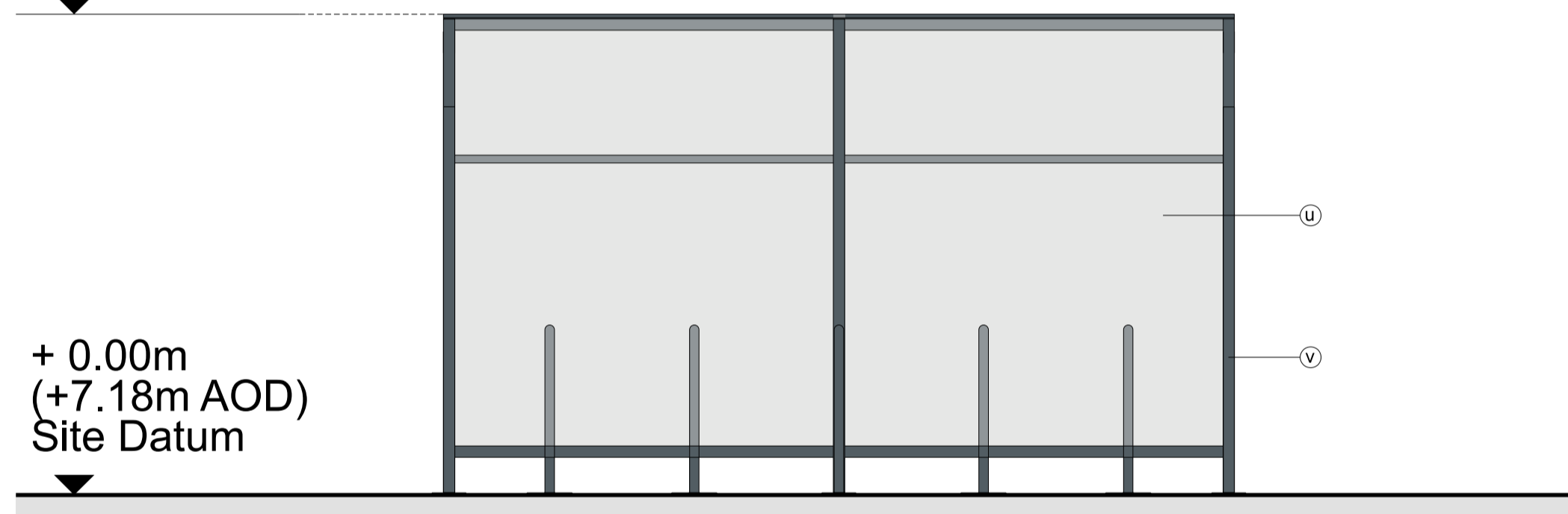
+ 2.13m
Top of roof



+ 0.00m
(+7.18m AOD)
Site Datum

North West Elevation

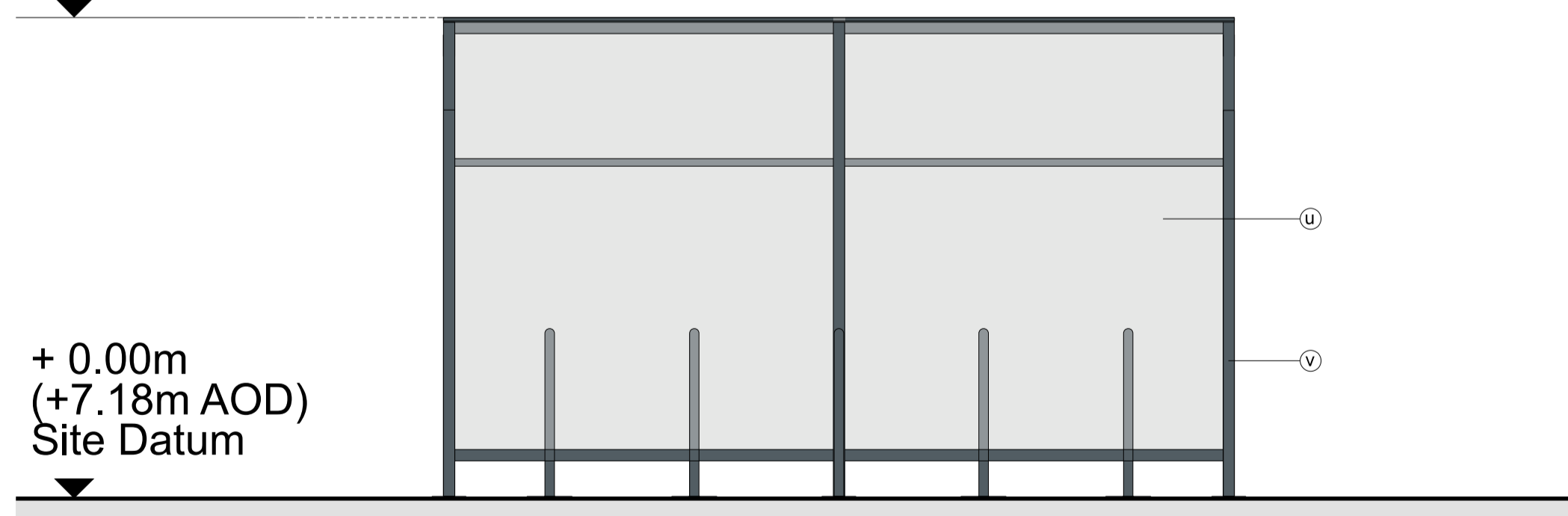
+ 2.13m
Top of roof



+ 0.00m
(+7.18m AOD)
Site Datum

South West Elevation

+ 2.13m
Top of roof



+ 0.00m
(+7.18m AOD)
Site Datum

North East Elevation

Note - Shelter based on Urban Street Products
Eco Cycle Compound and Rack
Framing colour to be Anthracite grey (RAL 7016)



NOTE

- THIS DRAWING IS COPYRIGHT GSDA LTD.
- THE CONTRACTOR MUST NOT SCALE FROM THE DRAWING ALL DIMENSIONS TO BE TAKEN FROM DIMENSION STRINGS.
- WHERE ANY DISCREPANCIES ARE FOUND BETWEEN DIMENSIONS THESE MUST BE BROUGHT TO THE ATTENTION OF THE ARCHITECTS FOR RESOLUTION.
- WHERE DISCREPANCIES EXIST BETWEEN REFERENCE OR ASSEMBLY DRAWINGS & DETAIL DRAWINGS, THE LATTER TAKE PREFERENCE.

LEGEND			
(a) Composite metal wall cladding / flashing Colour: Albatross (RAL 240 80 05)	(j) PPC aluminium louvres, Colour: Albatross (RAL 240 80 05)	(p) PPC aluminium framed curtain walling, glazing and personnel doors Colour: Anthracite (RAL 7016)	(u) Polycarbonate wall and roof panels Colour: Clear
(b) Composite metal wall cladding / flashing Colour: Hamlet (RAL 9002)	(k) PPC aluminium louvres, Colour: Anthracite (RAL 7016)	(q) PPC aluminium personnel doors Colour: Hamlet (RAL 9002)	(v) PPC Sheffield type bicycle rack Colour: Anthracite grey (RAL 7016)
(c) Composite metal wall cladding / flashing Colour: Anthracite (RAL 7016)	(l) PPC aluminium louvres, Colour: Hamlet (RAL 9002)	(r) Curtain walling glass spandrel (blanking) panels Colour: Alaska Grey (RAL 7000)	(w) Galvanised steel
(d) Composite metal wall cladding / flashing Colour: Olive Green (RAL 100 30 20)	(m) PPC metal stack casing, metal ducting, tanks and silos Colour: Oyster (RAL 7035)	(s) In situ cast concrete bund and process building plinth	(x) Flat roofing - Single ply membrane system. Colour: Light Grey
(e) Composite metal wall cladding / flashing Colour: Pale Green (RAL 502 1)	(n) Metal roller shutter doors Colour: Anthracite (RAL 7016)	(t) Engineering brick plinth Colour: Staffordshire Slate Blue Smooth (from Ibstock)	
(f) Composite metal wall cladding / flashing Colour: Moorland Green (RAL 100 60 20)	(o) Metal roller shutter doors Colour: Hamlet (RAL 9002)		
(g) Metal trapezoidal profile roof cladding Colour: Albatross (RAL 240 80 05)			

Note: All materials, finishes and colours will be as stated or similar approved.

PROJECT		MÔR HAFREN ERF			
DRAWING		Cycle Store Plan and Elevations			
FOR PLANNING		-	20/08/24	Issued for planning	
1:50@A3	1:50@A1	20/08/24	DATE		
1383 PL314		-	REVISION		
DWG. NO.					

GSDA
GARRY STEWART DESIGN ASSOCIATES

Highlands House, Office 300A, 165 The Broadway, Wimbledon, London, SW19 1NE
T: 020 8544 8085